

10/01/2020

A REPORT ON INDUSTRIAL VISIT TO KRUSHI INFRA PVT LTD.

An Industrial Visit was organized by the Department of Civil Engineering to **Krushii Infra Pvt Ltd.**, Taramatipeta, Hyderabad on 08th Jan 2020 where Bitumen Mixing Plant is shown to the III Year students of Civil Engineering.

Mr Gopinadh, Plant Incharge had given the permission for the visit. He welcomed the Students and the accompanied faculty member Mr S. Hemanth Sai, Asst Professor, Mr A.Sri Vishnu & Mr D.Prasad, Lab Technicians to the plant. Mr Rajesh, Site Engineer of NNRESGI also joined along with the students and faculty.

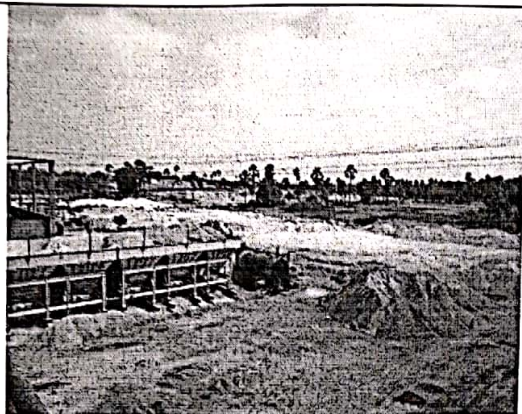
The plant incharge had discussed about the working of the bituminous plant with the students. The raw materials required for the mix are shown viz., Coarse Aggregate of 20mm & 10mm, dust, crude oil used for production of heat, raw bitumen, etc.. are shown to the students. He also explained that the purpose of establishing the plant in that place is the availability of raw materials.

The procedure for the production of the bitumen mix is explained by the Plant incharge in an excellent manner and it is as per the mix design, the required amount of raw bitumen is taken and is heated to 150-160°C, in the tanks provided. Also, the proportionate mixture of Aggregate and dust is also mixed well and sent through the conveyor belts to the rotating kilns where this mixture is heated to 160-170 °C. The heated bitumen and aggregate mixture are blended together in a separate chamber and the mixed material is carried by the trucks to the sites for laying of bituminous roads, i.e., Flexible Pavement. The students were also taken to every unit of the plant and explained in detail. The operation of the plant is not manual and it is mechanical. Depending on the requirement of the clients, different kinds of the mix is being produced in this plant and they are sent through trucks to the destination.

Later, the incharge had explained the role of Quality Control in a site where production is done. He told that Quality Control department in any of the sites plays a crucial role as the results from the QC department shows the quality of the production of the bitumen mix. There are different laboratory tests that are conducted on the bitumen for quality check like Bitumen extractor, Marshall Stability Test, Aggregate Impact Value Test. These are mainly considered for the production of the concrete. By conducting these tests, it is observed that

8% of bitumen of the total weight has to be used for laying the pavement. At the end, the students acquired practical knowledge on the production of the bitumen and its usage

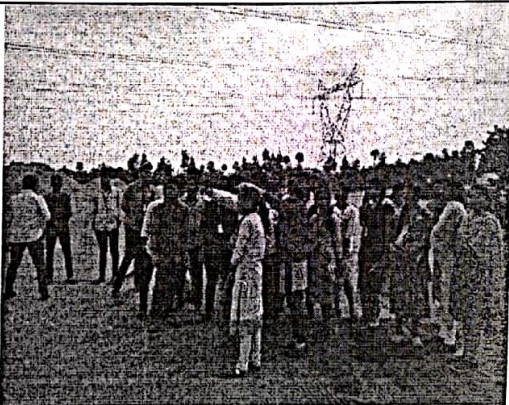
At the end, the faculty thanked the plant incharge for sharing his knowledge to the students by spending his valuable time.



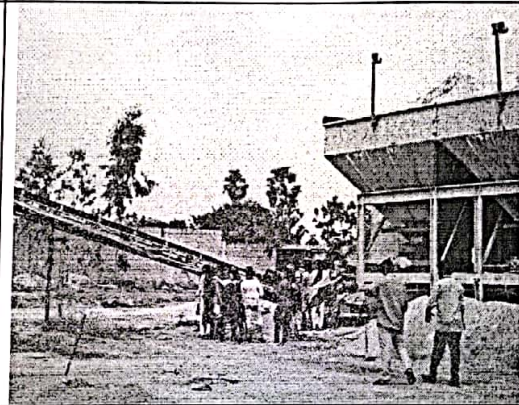
Aggregates and Dust that are used in the mix



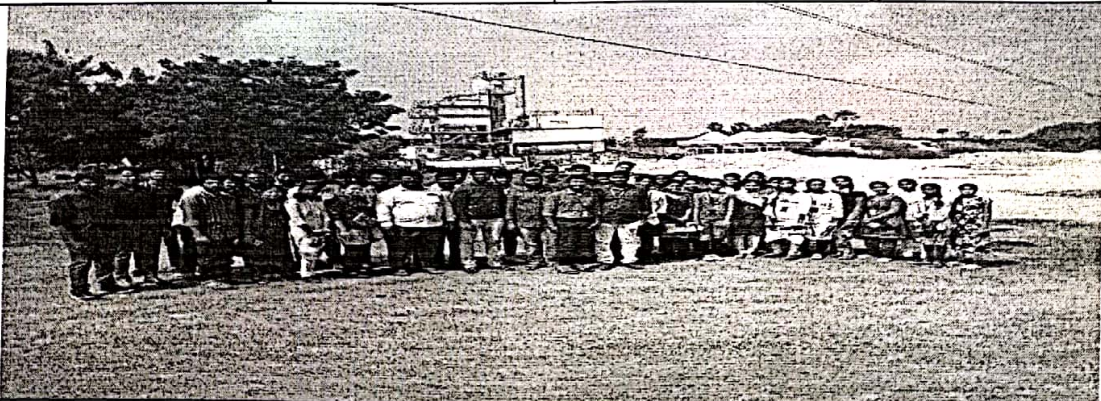
Storage of Crude oil and Bitumen in made these tanks



Mr Gopinadh, Site Engineer explaining the Production process to the students in the plant



Student's observation at the conveyer belts where aggregate mix is sent to the kiln for heating



A Group Photo of the III Year Civil Engg students and faculty with the Krushi Infra Team

Head of the Department
Civil Engineering
 Nalla Narasimha Reddy Education Society's
 Group of Institutions - Integrated Campus
 Chowdariauda (Vill), Ghatkesar (M.D), R.R Dist - 500 088